



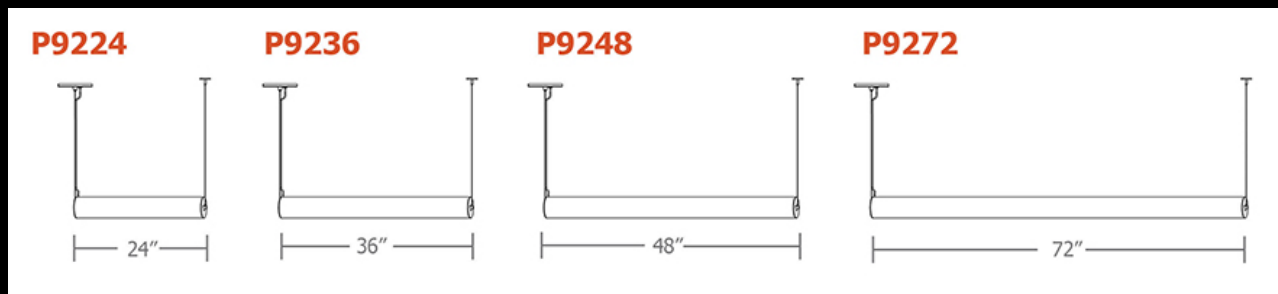
optional: CDVR



i.rod.4.hrz™ 5-slider

your lighting rep has
recommended the **i.rod.4.hrz™**
cylinder pendant for your project
Let's take a quick look:

sizes and lumens



- P9224 (2ft) / 940 – 3200 lm
- P9236 (3ft) / 1880 – 3750 lm
- P9248 (4ft) / 1000 – 6450 lm
- P9272 (6ft) / 3000 – 9100 lm



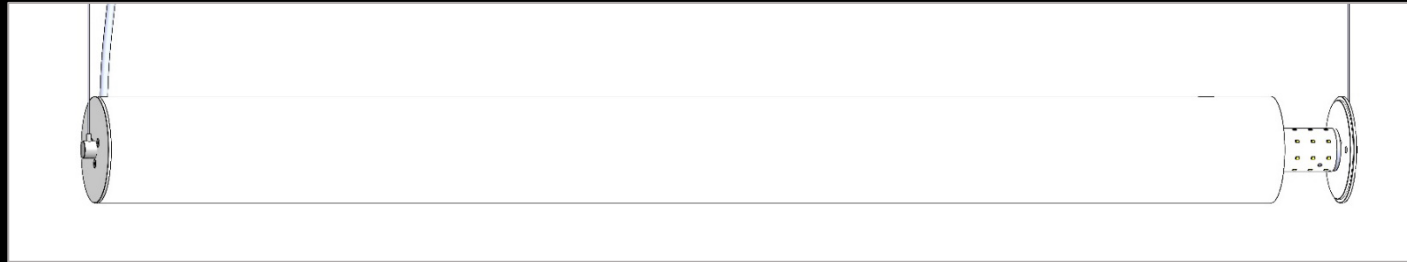
construction



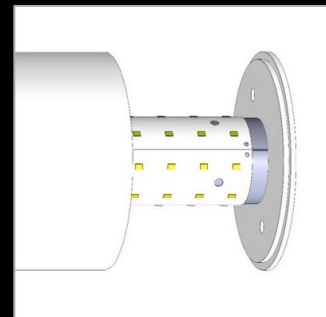
driver in remote enclosure,
constant current, field
maintainable, universal input
(120-277v), 0-10v controllable
to 1% dimming

mounts to 5" dia. steel canopy in matte
white finish. 2-pt 3ft/6ft stainless steel
cables, adjustable grippers allow for exact
desired mounting height. non power feed
leg has 2" matte white canopy.

optional: CDVR



end caps: comprised of two
graduated diameter .100" tk
aluminum plates in matte white,
designed to center acrylic and
block light leaks

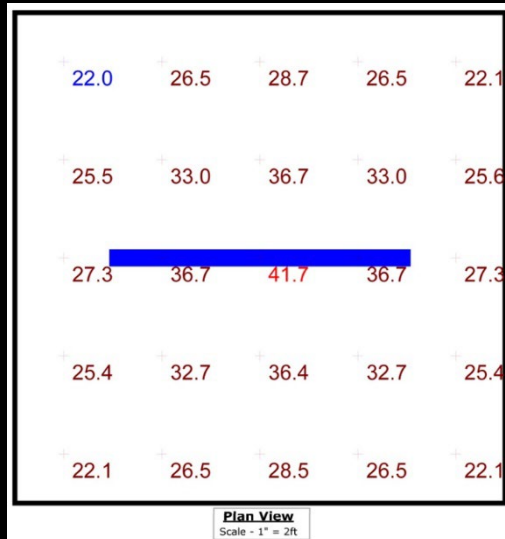


90 cri flexible planar LED
lighting sheet wrapped
around extruded
aluminum core provides
totally even luminance

performance

Statistics

Description	Symbol	Avg	Max	Min	Max/Min	Avg/Min
i.rod.4.hrz	+	29.1 fc	41.7 fc	22.0 fc	1.9:1	1.3:1



- 10' x 10' x 10'H space
- 80/50/20 reflectances
- bottom of fixture at 8' aff
- FC readings at 2.5' aff
- layout conducted using **90 cri P9272-HX 7500 lumens output unit**





www.impactltg.com

- spec sheet and color chart
- photometric files and BIM models
- built to order in Saint Louis, MO, USA
- 4-week lead time

i.rod.4.hrz™ 5-slider

